

CHRISTIE MICROTILES LED

Stunning visuals and limitless
design freedom

Corporate
Government
Education
Hospitality
Architectural design
Broadcast sets
Live events
Museums
Retail
Themed attractions

CHRISTIE[®]
MICROTILES[®]
LED



Limitless design freedom - Any shape, any size

Unleash your creativity and design outside the box with [Christie MicroTiles® LED](#). The proprietary cabinet-free Click-n-Go™ LED tiles [can be seamlessly arranged in near-limitless ways](#) while the innovative, ADA-compliant, proprietary QuickMount™ system lets you build your display in virtually any shape or size. Corners and curves, giant video walls, ribbons, and pillars - it's all possible with MicroTiles LED.

Superior visual quality - Automatically optimized

MicroTiles LED feature advanced LED display technology and powerful processing and control capabilities to produce an extraordinary, blur-free viewing experience. Bright, high-contrast visuals and cinema-quality color produces brilliant, true-to-life detail. With Patented Neighbor Detection™, individual tiles automatically detect and self-locate, while the sensor-based Auto-Match™ feature automatically matches color and brightness to achieve uniformity across the entire display for the entire operational lifetime.



Custom design

90° inside and outside corners

Concave and convex curves

12-bit at 4K@120Hz

Cinema-quality color

>97% uniformity

TAA-compliant





INNOVATION CONTINUED

Christie MicroTiles LED continue the legacy of innovation set by the original platform and take it a monumental leap forward.

Our mission to develop the best LED display technology never stops. Christie® engineers continue to apply everything that makes MicroTiles LED a success as they innovate and launch new models. The result is an intelligent system architecture that excels beyond any other LED display on the market.

Limitless design freedom

Superior visual quality

Intelligent design

Intelligent design – Smarter at every step

We took an uncompromising approach to develop an intelligently-designed video wall solution that eliminates the major pain points of traditional LED technology. From installation to maintenance and servicing to operation, MicroTiles LED work smarter so you don't have to.

See how you can use **MicroTiles LED** in your space

[Try the Christie LED designer »](#)

Smart installation

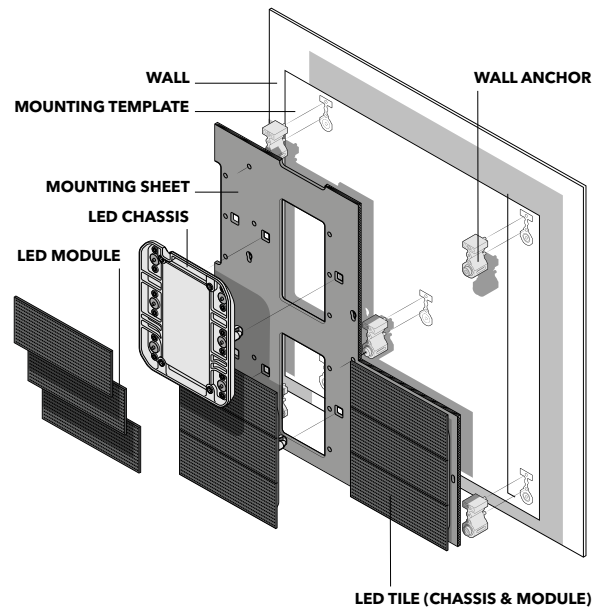
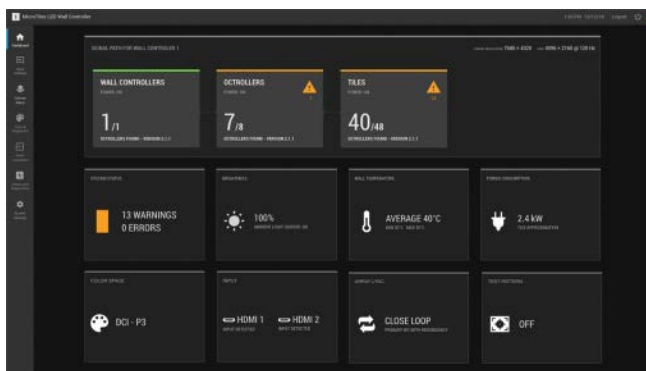
The proprietary QuickMount™ system uses custom mounting templates, laser-cut steel mounting sheets, and machined wall anchors to eliminate any alignment challenges. Once the sheet is mounted, the small size and light weight of the cabinet-free tiles reduces installation complexity, while saving space and increasing flexibility. With Click-n-Go™ magnetic LED tiles, populating the display is incredibly fast. The QuickMount system also enables a phased installation that allows the mounting apparatus to be delivered and installed while the LED tiles are manufactured, saving time and cost.

Smart operation

Take complete control of your display. The MicroTiles® LED WebUI is an intuitive, easy-to-use, web-based control interface you can access from any connected device, giving you total command of display setup, control, and management.

Smart service and maintenance

With 100,000 hours of operational life, maintaining and servicing a MicroTiles LED display is minimal. Patented Infrared Neighbor Detection™ and AutoMatch™ brightness and color calibration achieve near-perfect uniformity, while the front-serviceable, hot-swappable tiles give technicians complete access. For added convenience, remote power and control components can be installed in convenient locations away from the video wall, which removes heat, noise, and complexity.



POWERFUL EVOLUTION

Christie MicroTiles - Part of our DNA

Since 2009 when we launched the original MicroTiles®, we've never looked back. They represent everything we value: out-of-the-box thinking, boundary-pushing innovation, engineering expertise, amazing visual experiences, and a strong commitment to quality.

It's upon this foundation that we continue the next evolution of this transformative display technology.

Complete, integrated solutions

We're uniquely positioned to offer complete, integrated audiovisual solutions. We carry a wide range of industry-leading, TAA-compliant display technologies, powerful processing options, and content management and networking platforms – all designed to work seamlessly together.

***There's a reason the world's
biggest brands choose
Christie MicroTiles LED.***



NEWLY LAUNCHED

The evolution of LED continues

We never stop innovating - it's in our DNA. It's why we added MicroTiles LED 1.0mm and 0.75mm models to our lineup with increased reliability, durability, and power efficiency. Delivering everything you expect from our already game-changing LED technology, the new models also offer superior visual performance, making them ideal for up-close and highly detailed viewing environments. With an even slimmer pixel pitch and a finer resolution packed into a smaller space, you'll see the difference.

The next chapter of LED

The 1.0mm and 0.75mm models are even more reliable, even easier to maintain, and have an even longer life with the latest flip-chip technology. We do this by flipping the chip upside down, which dissipates heat more efficiently.

With energy-saving technology, these models reduce power consumption and give you an even more energy-efficient LED display. This energy savings comes from using common cathode technology, which distributes power proportionately to each RGB module as needed.

Enhanced optical performance and amazingly stunning visuals

LED encapsulations on our 1.0mm tiles improve both durability and visual performance. This extra layer makes the LED more durable, offering protection against dust and minor scratches, and gives you the option to add interactive touch to your MicroTiles LED video wall.

Encapsulations also improve optical performance, which offers outstanding black-level performance and better perceived contrast.

Interested in building an unforgettable wall with MicroTiles LED? Have any questions or need any additional information?

[Let's connect! »](#)



christiedigital.com

For the most current specification information, please visit christiedigital.com

Copyright 2022 Christie Digital Systems USA, Inc. All rights reserved. Our centers of excellence for manufacturing in Kitchener, Ontario, Canada and in Shenzhen, China are ISO 9001:2015 Quality Management System-certified. All brand names and product names are trademarks, registered trademarks or tradenames of their respective holders. "Christie" is a trademark of Christie Digital Systems USA, Inc., registered in the United States of America and certain other countries. DLP® and the DLP logo are registered trademarks of Texas Instruments. Performance specifications are typical. Due to constant research, specifications are subject to change without notice.
CD2909-MicroTiles-brochure-Sept-22-EN



CHRISTIE®