

CP4415-RGB

Small-screen auditoriums | Boutique cinema | Post production | Screening rooms

Advanced, yet affordable, DCI compliant cinema projection featuring Christie Reallaser™ technology for screens up to 52 feet wide



Key features:

- › **Ultra-fast processing** - HDMI 2.0 and 4x 12GB SDI inputs for 1.06G pixels per sec
- › **Long-lasting light source** - over 50,000 hours of optimal performance
- › **Enhanced Wavelength Diversity (EWD)** - utilising MPD technology to improve image quality on all screen types
- › **Low maintenance** - sealed optics for protection against dust ingress
- › **Hyper realism** - new system architecture that displays content without motion blur and artifacts
- › **Best-in-class operational efficiency** - 11.9 lumens per watt



CHRISTIE
Reallaser™

Advanced laser light source for accurate reproduction of DCI content

CineLife+™

Adds ultra high frame rate providing each eye 2K 120fps, 4K 120fps, 4K 3D 60fps

DIGITAL CINEMA CONFIGURATOR

Help find the right lens for your projector on our website

Specifications

Christie CP4415-RGB

| | | |
|-----------------------------------|--------------|---|
| Brightness | nominal | • Up to 15,000 lumens ¹ |
| | lifetime | • >50,000 hours ² |
| Contrast ratio | | • Up to 6000:1 full field on/off ³ |
| Digital micromirror device | | • 1.38" Enhanced 4K 3-chip DMD DLP Cinema® • 4096x2160 (4K) |
| Color gamut | native gamut | • >95% of Rec 2020 coverage |
| Processing electronics | | • Christie® CineLife+™ Series (Series-2 IMB compatible) ⁴ • HDMI 2.0 x2 • 4K120 fps ⁵ • 1G Ethernet x1 • 12G SDI x 4 • DisplayPort 1.2 x2 • Remote UI • Electronic Color Convergence (ECC) |
| Lens mount configuration | | • Fully motorized Intelligent Lens System (ILS™) |
| Lenses | | • HB and UHC: 1.13-1.66 / 1.31-1.85 / 1.45-2.17 / 1.63-2.71 / 1.95-3.26 / 2.71-3.89 / 3.89-5.43 / 4.98-7.69 |
| Power input requirements | | • Input A: 200-240 VAC @ 50-60Hz, 10A max • Input B (UPS input): 100-240VAC @ 50-60Hz, 10A max |
| Cooling | | • Liquid pressurized/TEC, self-contained • Heat extraction optional |
| Power consumption | | • 1265W ⁶ , max DCI brightness, @25°C 4320 BTU/hr |
| Laser class | | • Class 1 - Risk Group 3 |
| Weight | | • As installed: 238lbs max (108kg) |
| Dimensions (w/o lens) | size (LxWxH) | • 37.2 x 28.0 x 20.7" (944 x 711 x 525mm) |
| Accessories | | • Rack mount pedestal • Rack mount pedestal adaptor • Extraction duct adaptor • Touch panel controller (optional) • Enhanced 4K HB and UHC lens suite available |

¹ With existing high brightness cinema lens.

² Subject to variables specific to each installation. Please see Christie's laser best practices guide for more information.

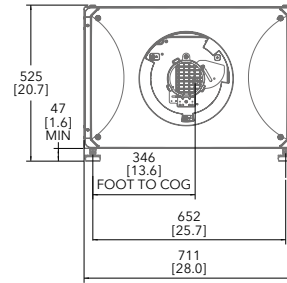
³ With new UHC cinema lens.

⁴ Supports legacy Series 2 IMBs. A list of supported versions is available upon request.

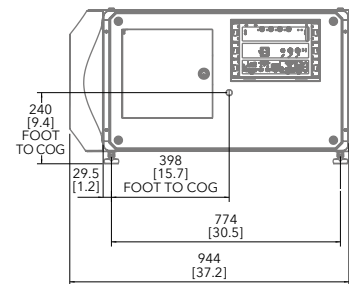
⁵ With the GDC SR-6400 IMB.

⁶ Typical power consumption. May be impacted by environmental conditions.

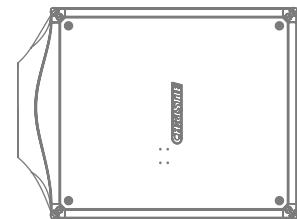
Front view



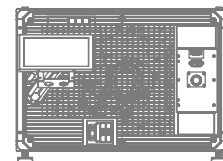
Side view



Top view



Back view



Corporate offices

Worldwide offices

| | | | | |
|--|--|---|-----------------------------------|---|
| Christie Digital Systems USA, Inc. Cypress PH: +1 714-236-8610 | Australia PH: +61 (0) 7 3624 4888 | China (Shenzhen) PH: +86 755 3680 7000 | Mexico PH: +52 (55) 4744-1791 | United Arab Emirates PH: +971 (0) 4 503 6800 |
| Christie Digital Systems Canada Inc. Kitchener PH: +1 519-744-8005 | Brazil PH: +55 11 3181-2952 | Colombia PH: +57 (315) 652-9620 | Singapore PH: +65 6877 8737 | United Kingdom PH: +44 (0) 118 977 8000 |
| | China (Beijing) PH: +86 10 6561 0240 | Germany PH: +49 221 99 512-0 | South Korea PH: +82 2 702 1601 | United States (Arizona) PH: +1 602-943-5700 |
| | China (Shanghai) PH: +86 21 6030 0500 | India PH: +91 (080) 6708 9999 | Spain PH: +34 (0) 91 633 99 90 | United States (Texas) PH: +1 469-757-4420 |

For the most current specification information, please visit christiedigital.com

Copyright 2023 Christie Digital Systems USA, Inc. All rights reserved. Our centers of excellence for manufacturing in Kitchener, Ontario, Canada and in Shenzhen, China are ISO 9001:2015 Quality Management System-certified. All brand names and product names are trademarks, registered trademarks or tradenames of their respective holders. "Christie" is a trademark of Christie Digital Systems USA, Inc., registered in the United States of America and certain other countries. DLP® and the DLP logo are registered trademarks of Texas Instruments. Performance specifications are typical. Due to constant research, specifications are subject to change without notice.
CD3378-CINE0094-CP4415-RGB-Datasheet-Mar-23-EN-US

